

SECTION 1, T.7N., R.1E., S.L.B. & M.

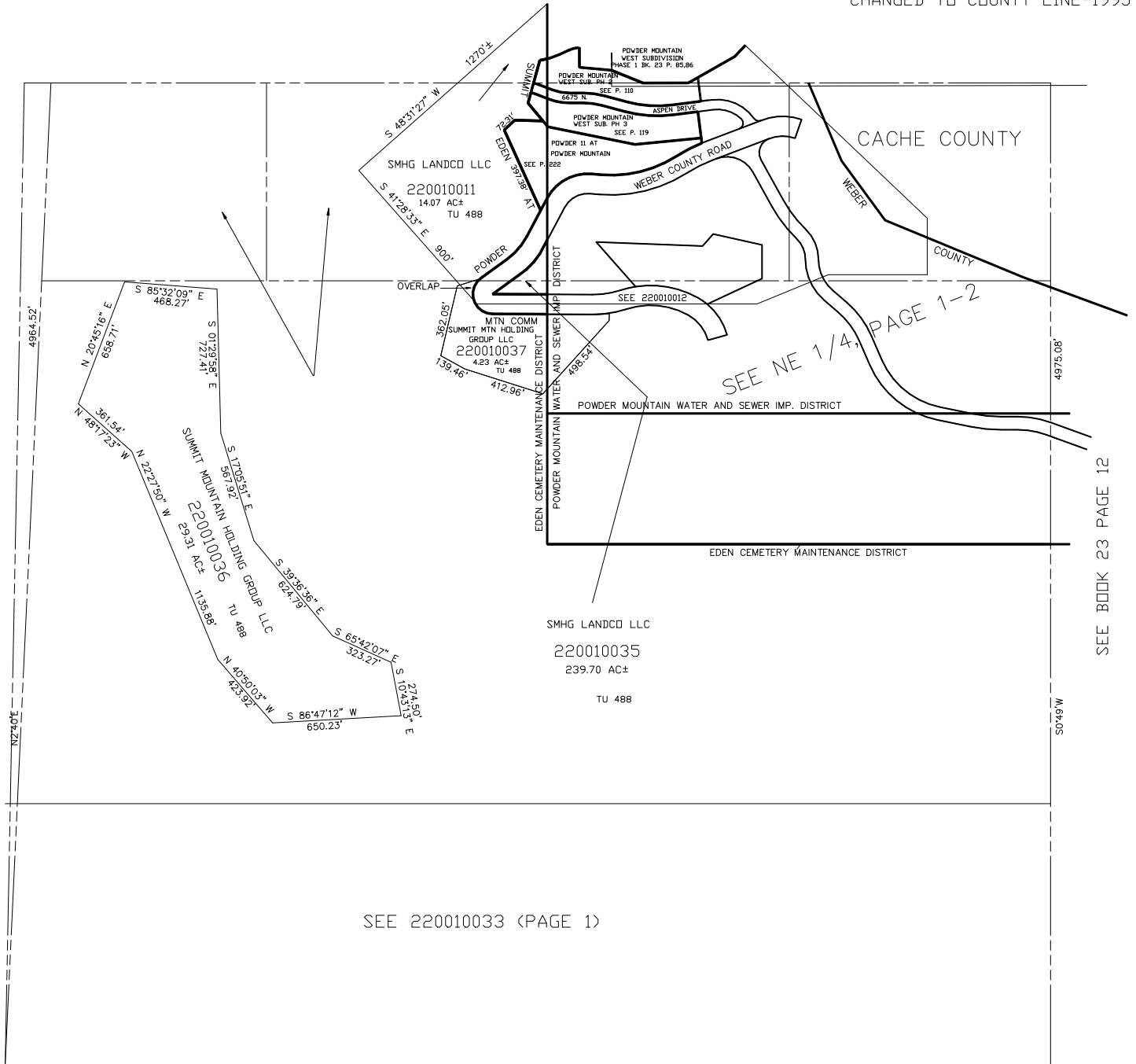
IN WEBER COUNTY

SCALE 1" = 400'

TAXING UNIT: 488

SEE BOOK 23 PAGE 44-1

NOTE: WEBER/CACHE ASSESSMENT LINE CHANGED TO COUNTY LINE-1995



SEE 220010033 (PAGE 1)

SEE PAGE 1

SEE BOOK 23 PAGE 12

SEE PAGE 6